

WKF W26A LWD VISION SERVICE RT 500TVD

ADN

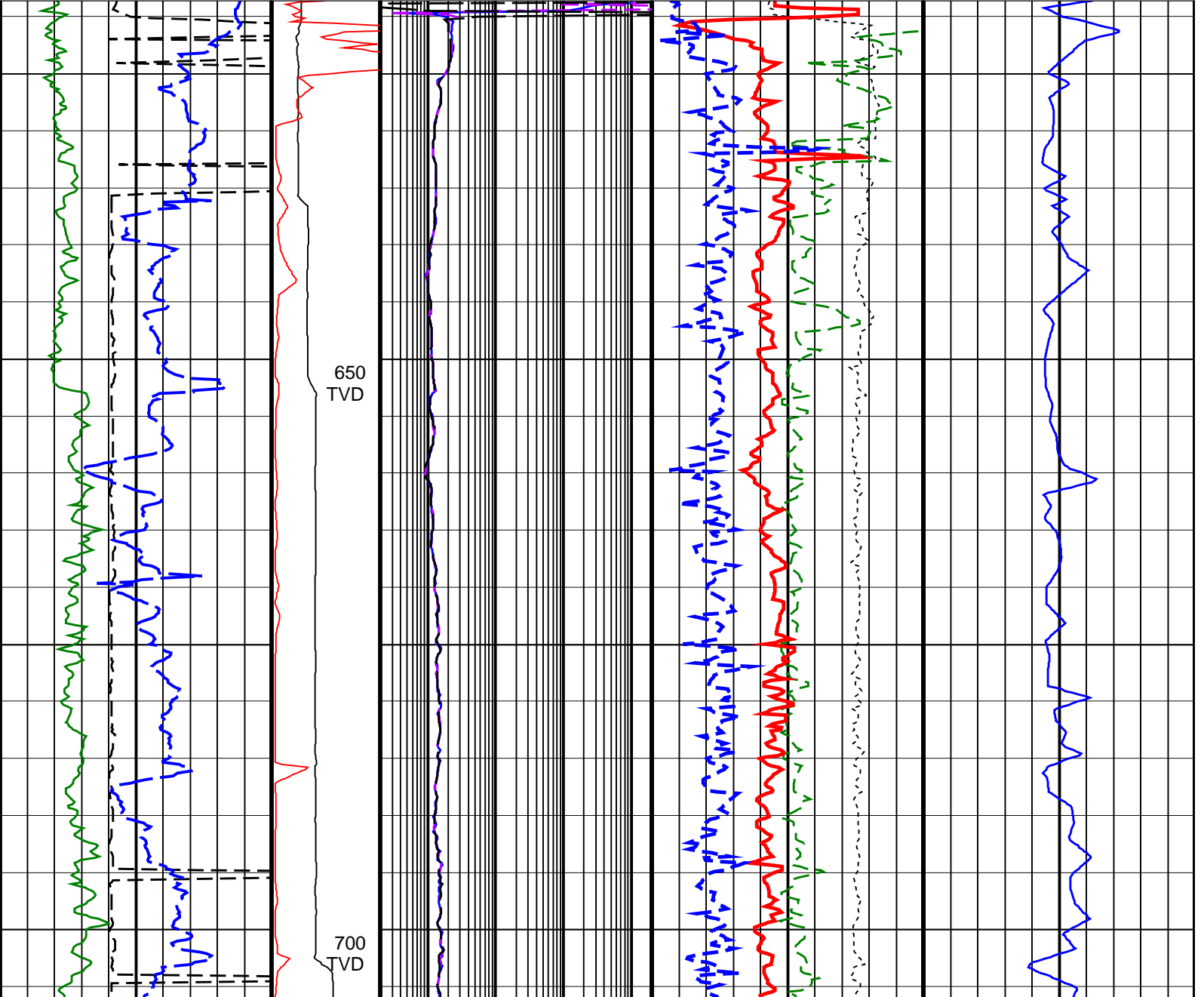
Id14_0c_26

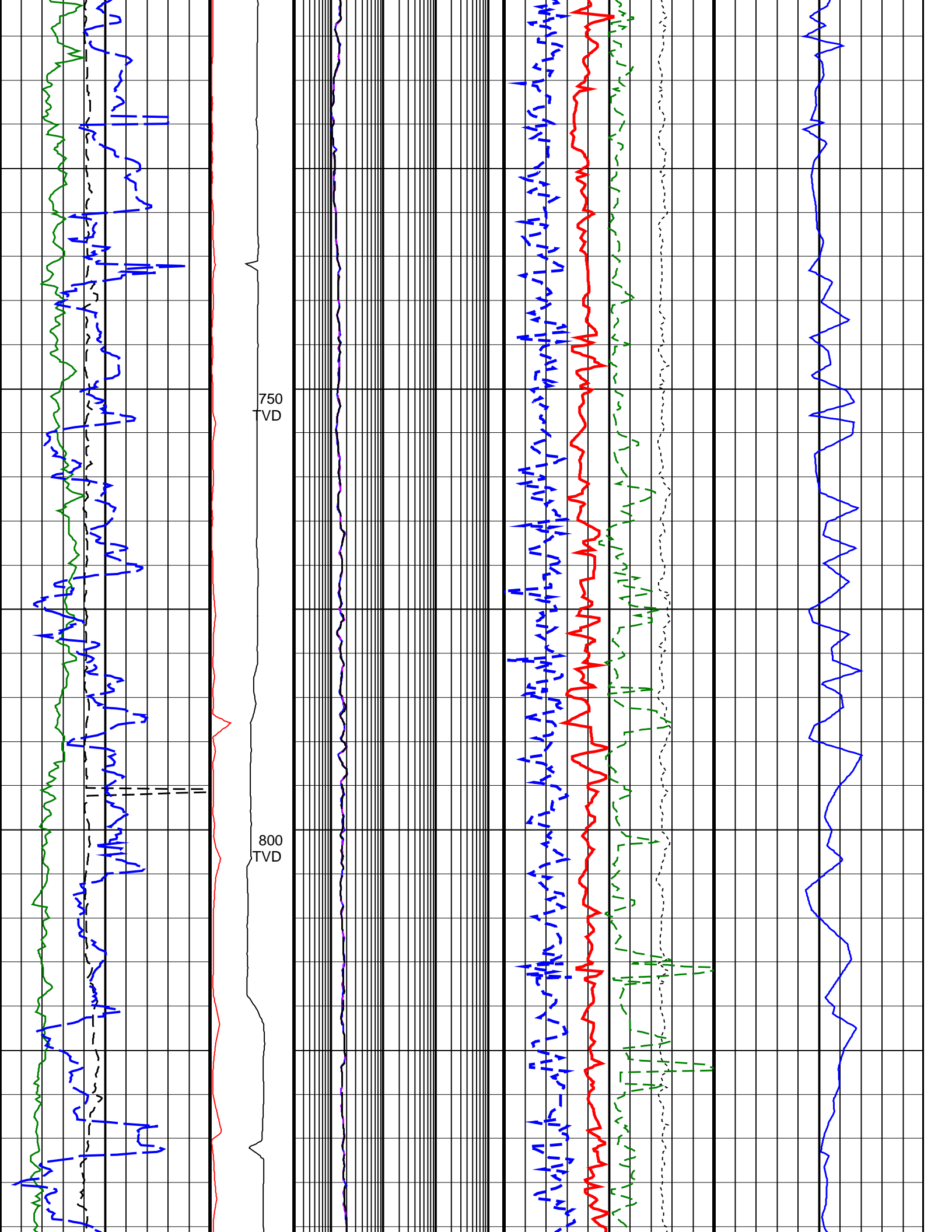
Format: VISION SERVICE RT 500TVD

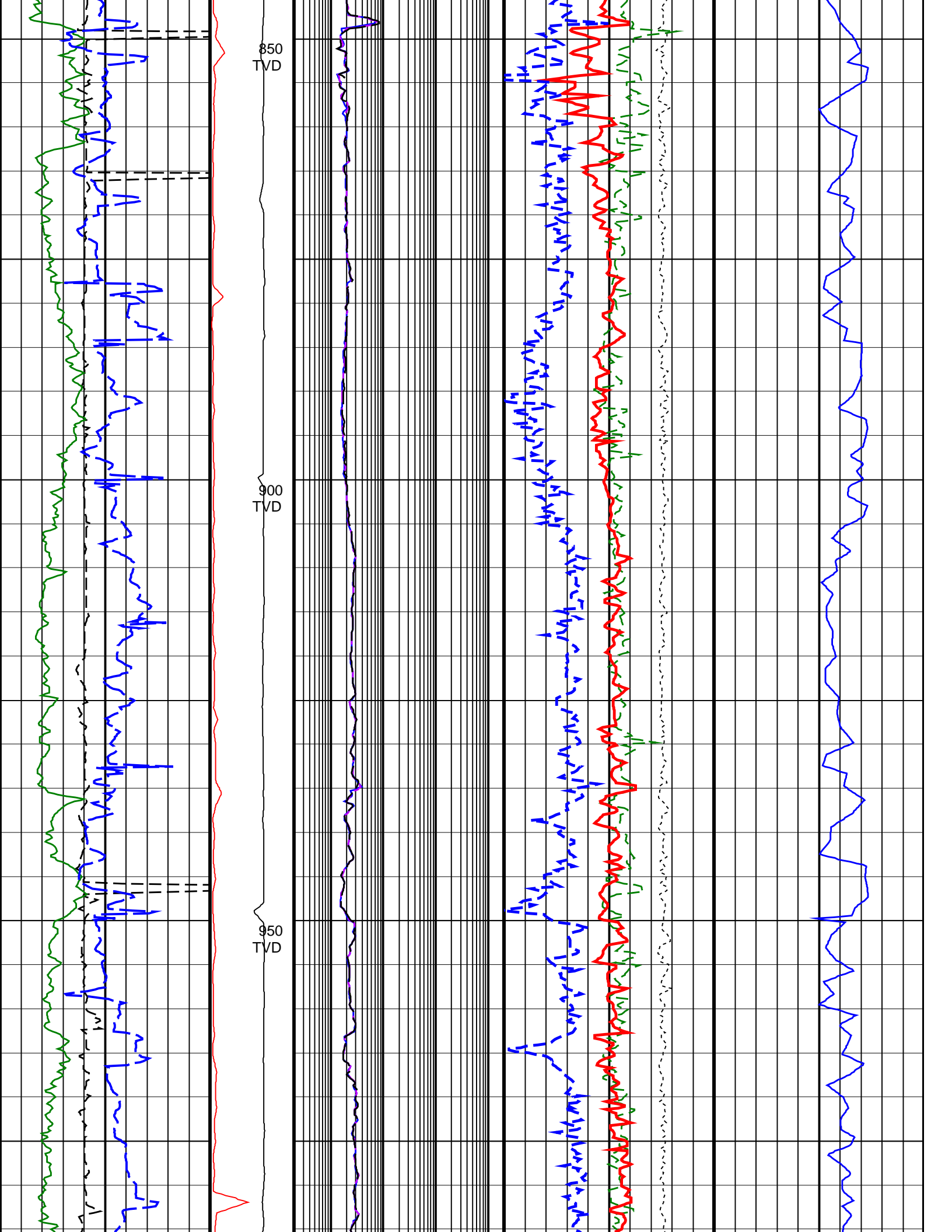
Vertical Scale: 1:500

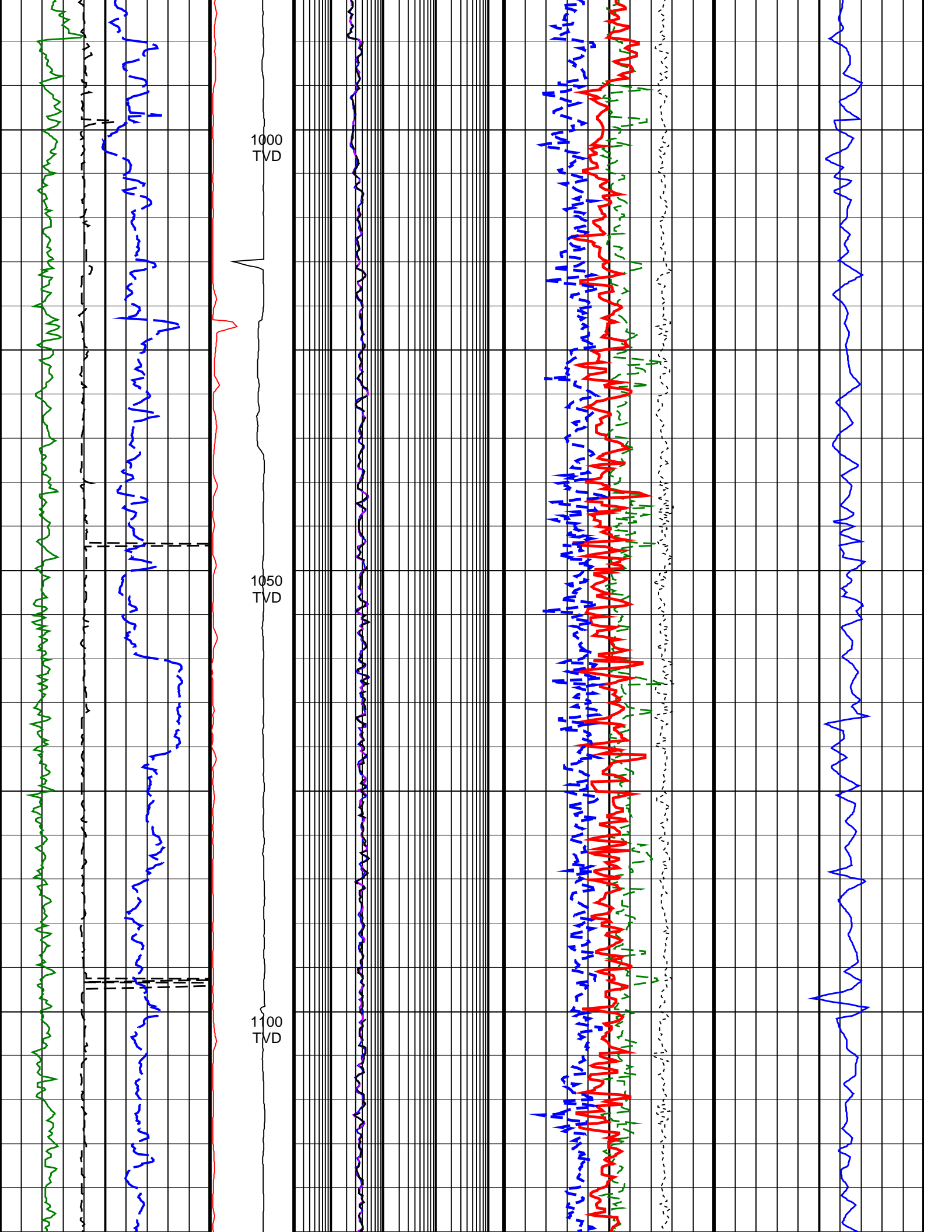
Graphics File Created: 21-Dec-2009 06:03

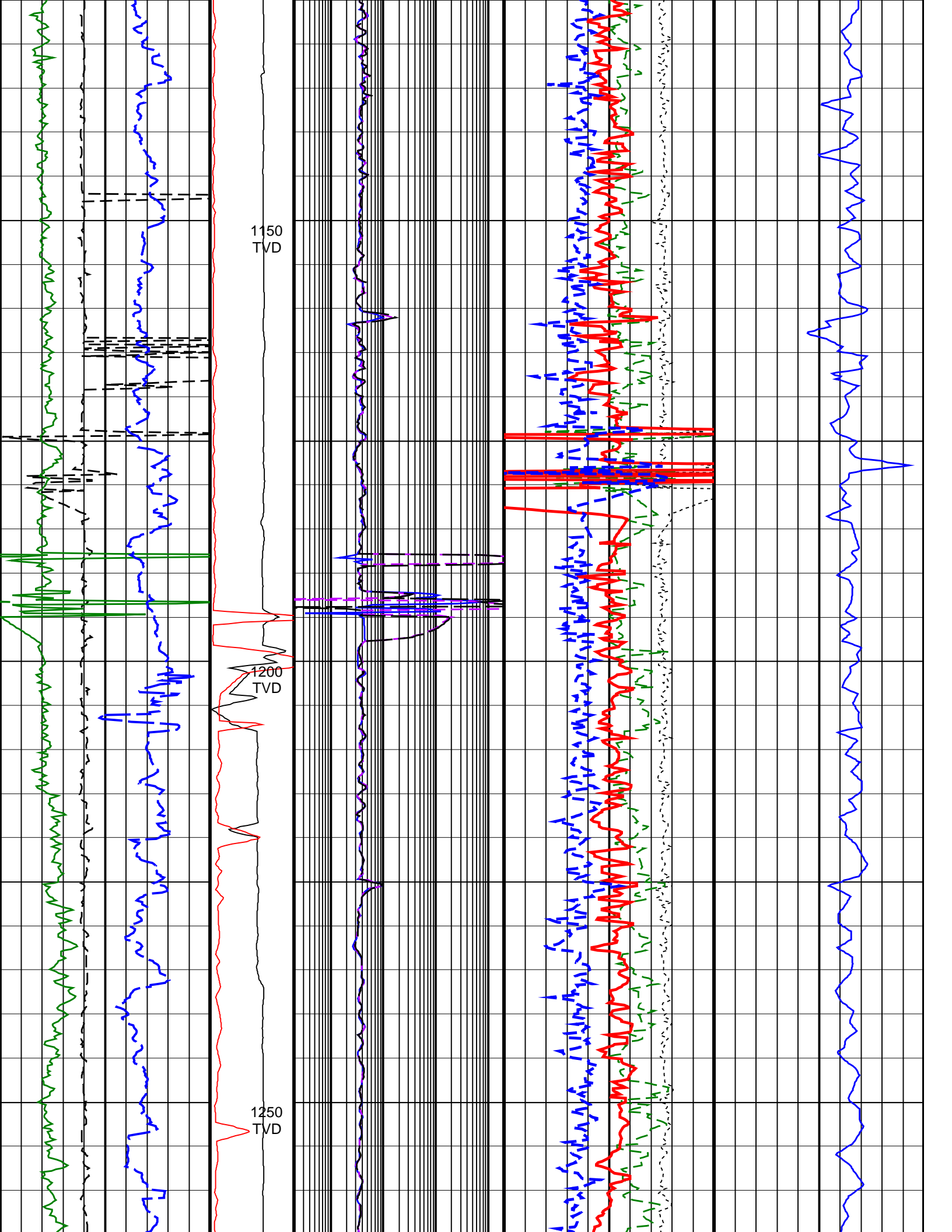
				Thermal Neutron Porosity, Real-Time (TNPH_ADN_RT) 0.45 (V/V) -0.15	
ARC Gamma Ray, Real-Time (ARC_GR_RT) 0 (GAPI) 200		ARC BHCorr Phase-Shift Resistivity 40-in. at 2 MHz, Real-Time (P40H_RT) 0.2 (OHMM) 2000		Bulk Density, Bottom, Real-Time Computed Downhole (ROBB_DH_RT) 1.85 (G/C3) 2.85	
Average Borehole Diameter, Real-Time (ADIA_ADN_RT) 6 (IN) 16	MWD Collar RPM (CRPM_RT) (RPM) 0 250	ARC BHCorr Phase-Shift Resistivity 28-in. at 2 MHz, Real-Time (P28H_RT) 0.2 (OHMM) 2000		Photoelectric Factor, Bottom, Real-Time (PEB_RT) 0 (-----) 10	
ROP*5 (ROP5) (M/HR) 200 0	PKPK_RPM (Stick_RT) (RPM) 0 250	ARC BHCorr Phase-Shift Resistivity 16-in. at 2 MHz, Real-Time (P16H_RT) 0.2 (OHMM) 2000		Bulk Density Correction, Bottom, Real-Time Computed Downhole (DRHB_DH_RT) -0.75 (G/C3) 0.25	Delta-T Compressional, Real-Time (DTCO_RT) (US/M) 600 100

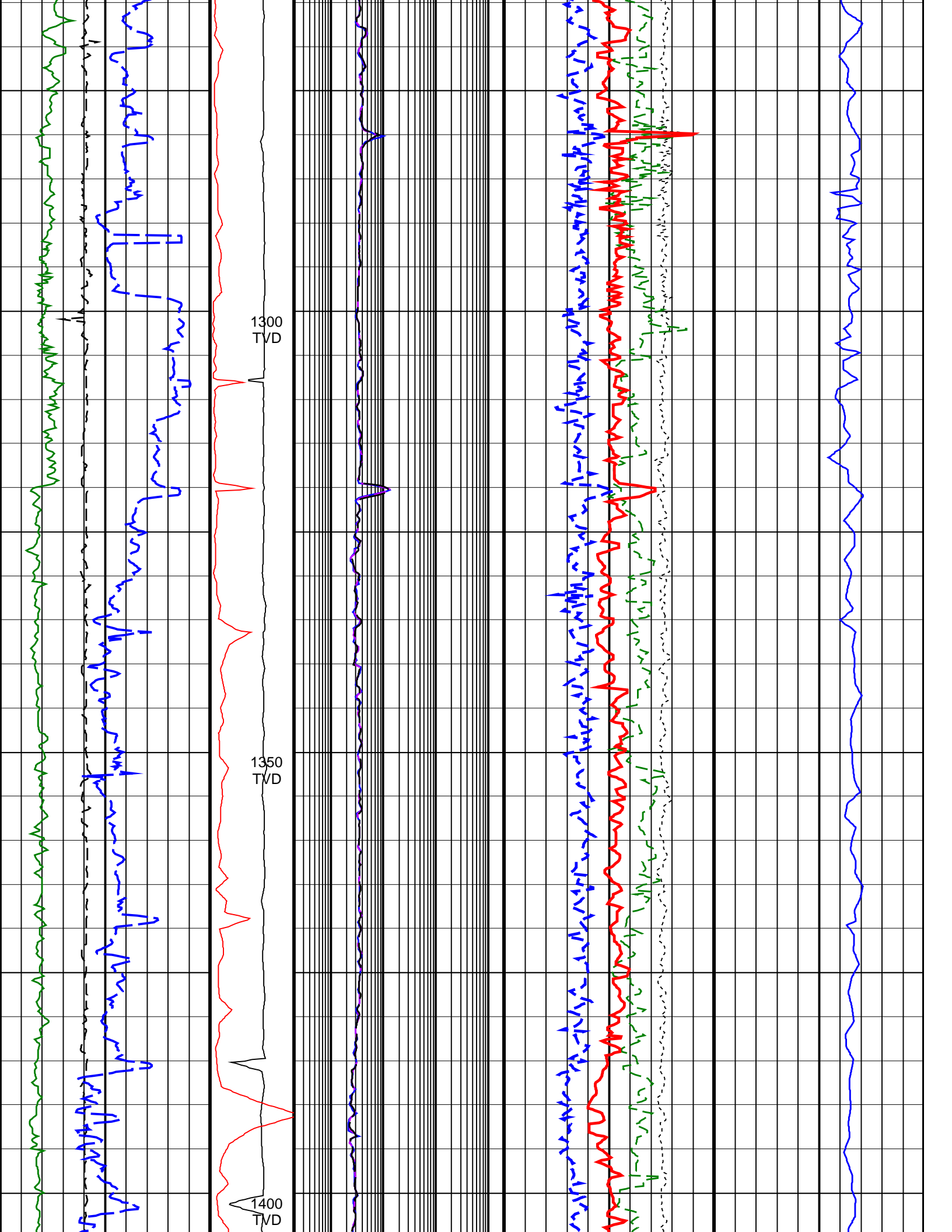


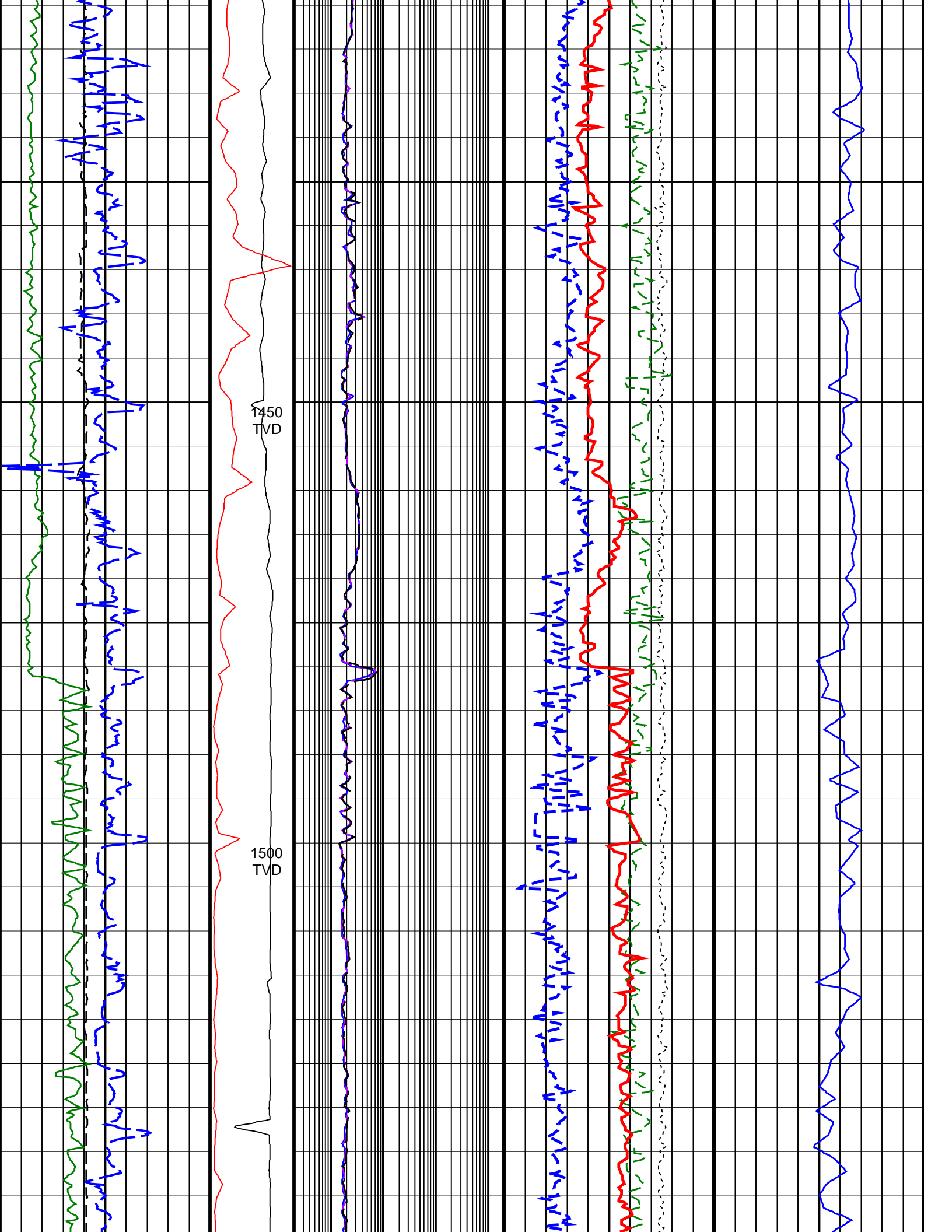


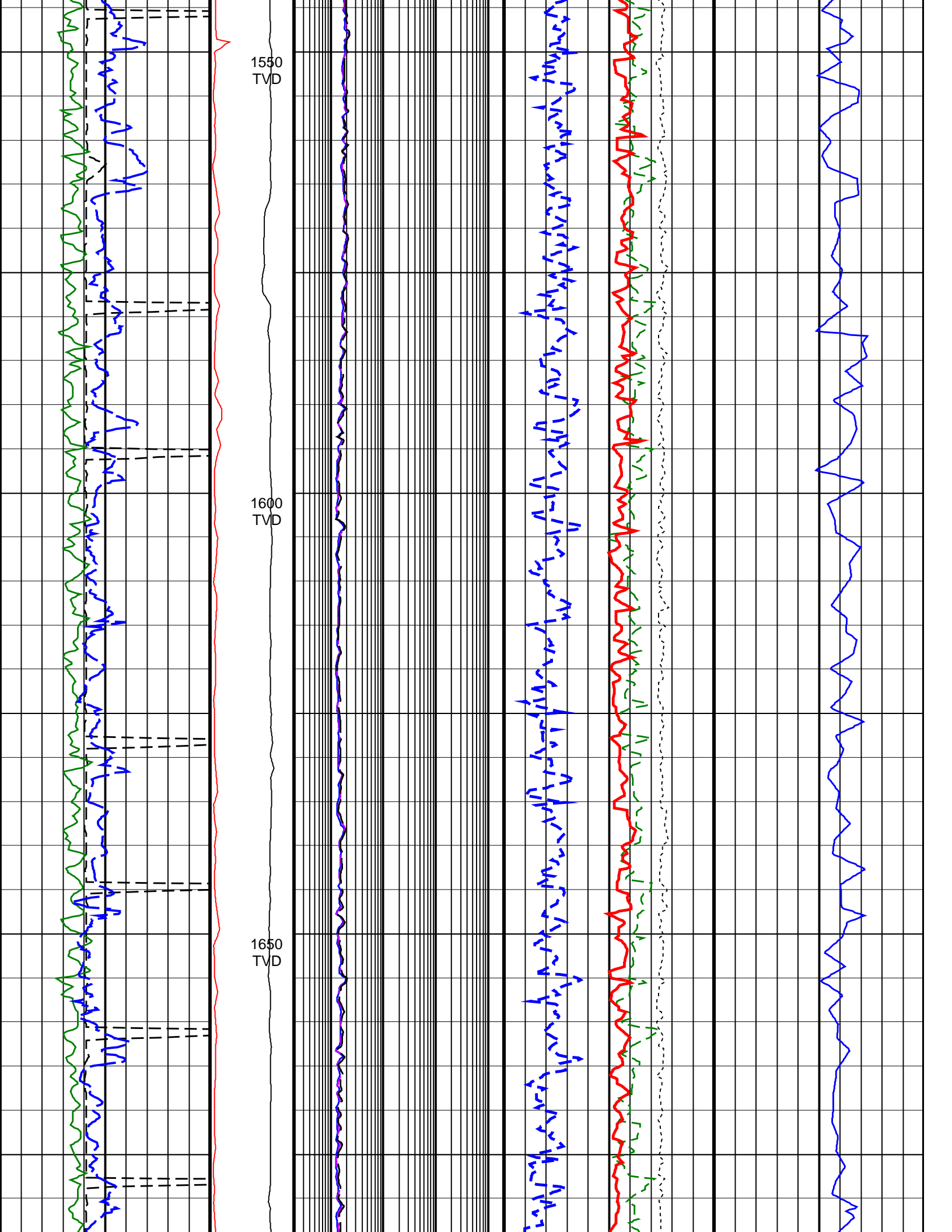


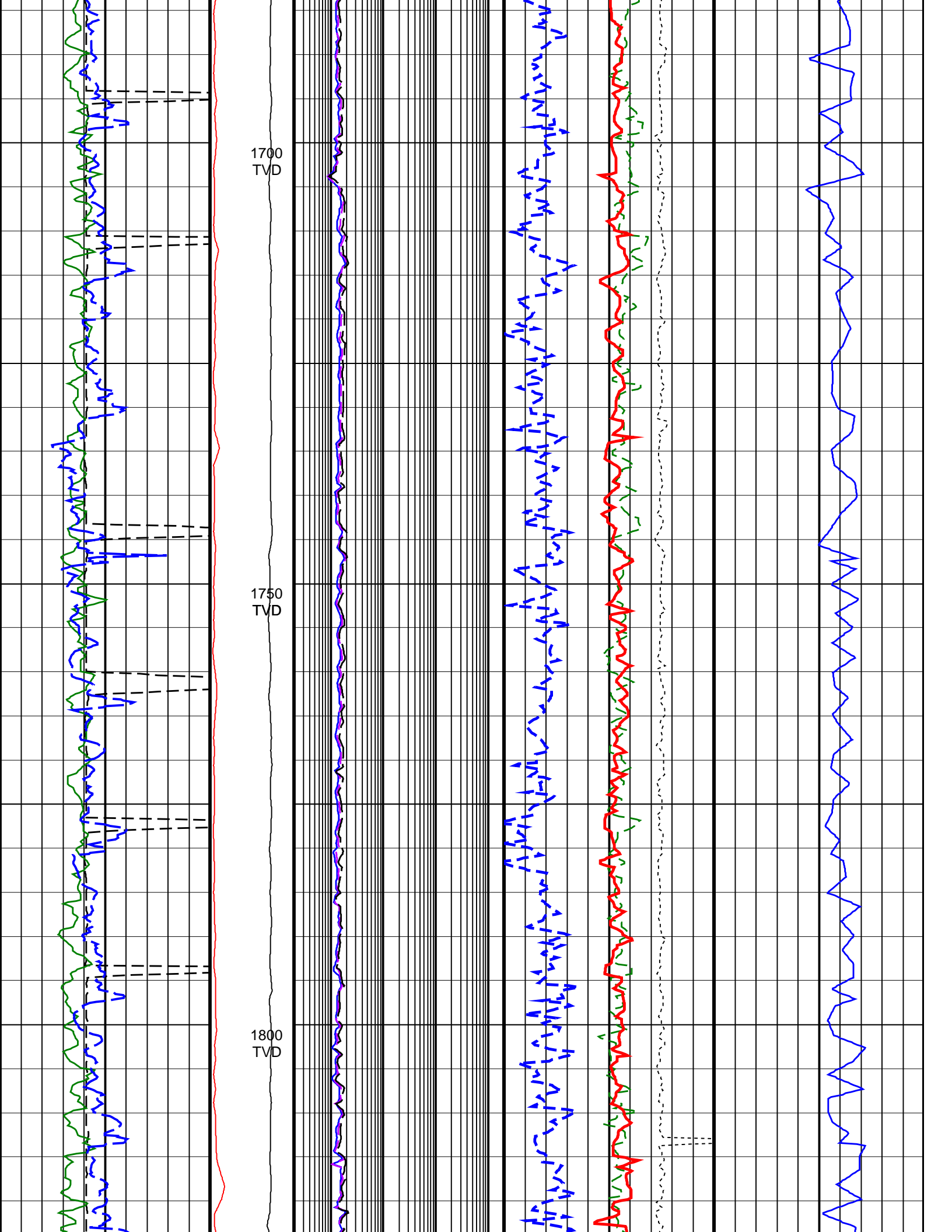


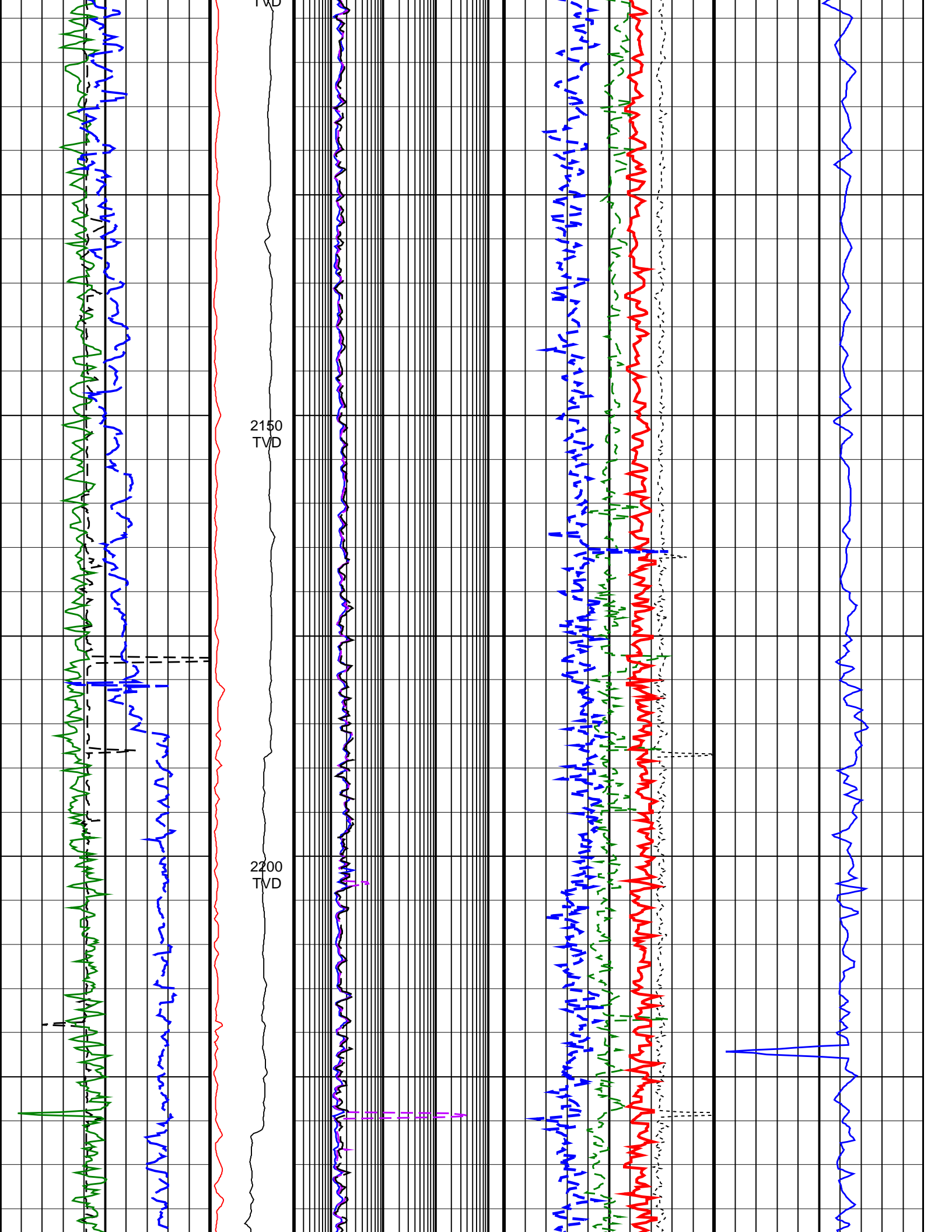


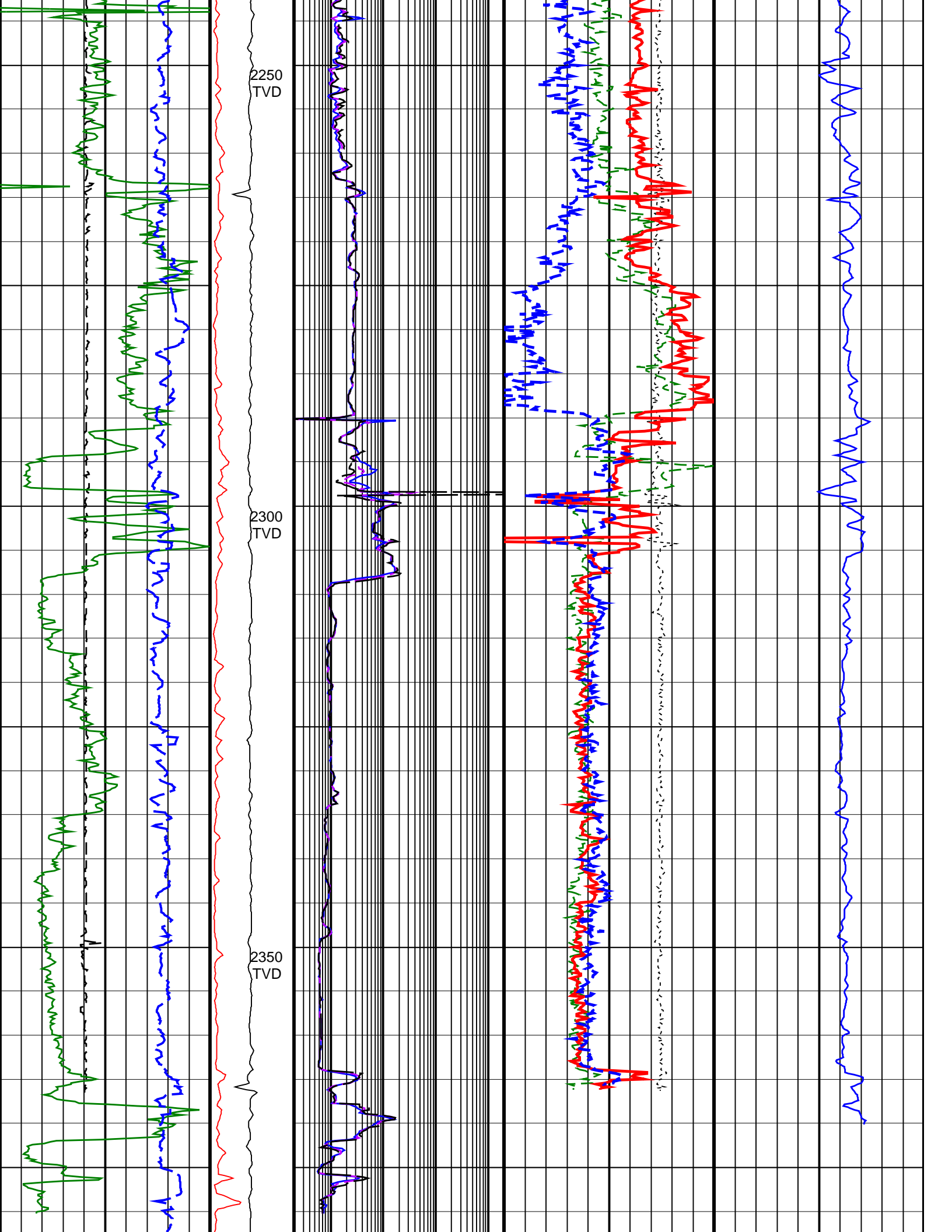












<u>ROP*5 (ROP5)</u> 200 (M/HR) 0	PKPK_RPM (Stick_RT) (RPM) 0 250	ARC BHCorr Phase-Shift Resistivity 16-in. at 2 MHz, Real-Time (P16H_RT) 0.2 (OHMM) 2000	Bulk Density Correction, Bottom, Real-Time Computed Downhole (DRHB_DH_RT) -0.75 (G/C3) 0.25	Delta-T Compressional, Real-Time (DTCO_RT) 600 (US/M) 100
Average Borehole Diameter, Real-Time (ADIA_ADN_RT) 6 (IN) 16	MWD Collar RPM (CRPM_RT) (RPM) 0 250	ARC BHCorr Phase-Shift Resistivity 28-in. at 2 MHz, Real-Time (P28H_RT) 0.2 (OHMM) 2000	Photoelectric Factor, Bottom, Real-Time (PEB_RT) 0 (-----) 10	
ARC Gamma Ray, Real-Time (ARC_GR_RT) 0 (GAPI) 200		ARC BHCorr Phase-Shift Resistivity 40-in. at 2 MHz, Real-Time (P40H_RT) 0.2 (OHMM) 2000	Bulk Density, Bottom, Real-Time Computed Downhole (ROBB_DH_RT) 1.85 (G/C3) 2.85	
			Thermal Neutron Porosity, Real-Time (TNPB_ADN_RT) 0.45 (V/V) -0.15	

IDEAL Version: ID14_OC_26

IDF

ADN

Id14_Oc_26